

“Process” and “Procedure” juxtaposed. Their isolation tolerates disparity.

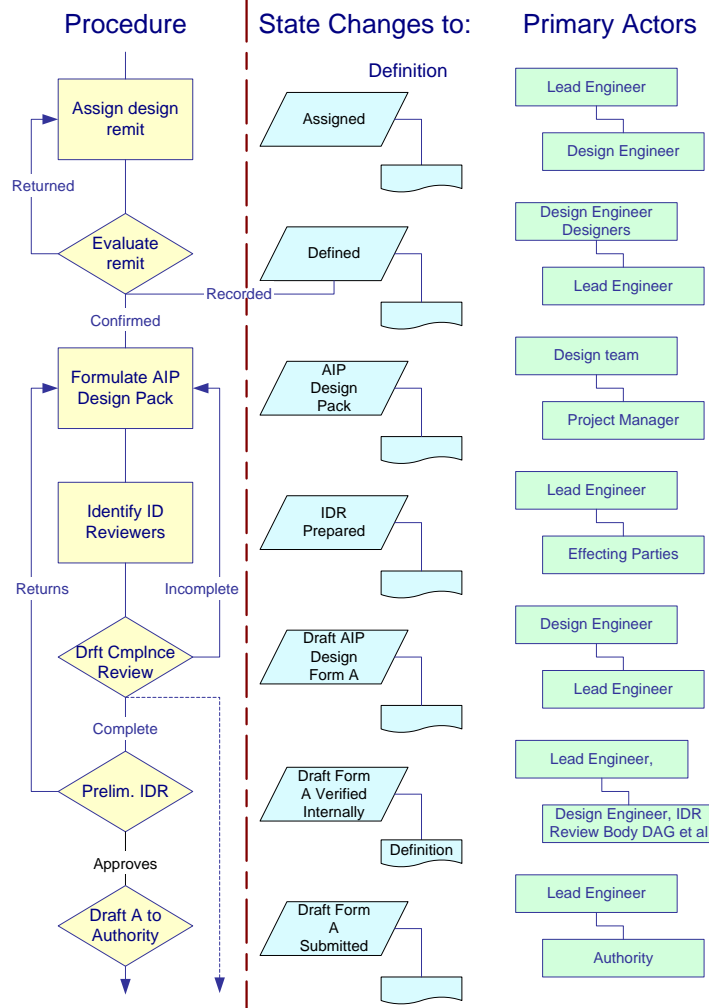


Fig. 1 Procedural expression of state changes generated by a GRIP disciplined process

Formal language excoriates ambiguity¹:
Processes create substance through validated actions that cause change ...
Procedures progress to closure via sequential actions that established methods impose ...

Process illustrated ...

Programme direction creates substance – a physical entity, a logical construction, a critical service, etc. – as procurement and associated contracts demand. Risks attach to the primary contracting enterprise, peculiarly. Must it be a sorry place? Well, no!

“Complexity made simple”² illustrates delivery of a contractual requirement, constructed by multiple designers. Their coherence and adaptation to emergent changes sustains a conclusive verification that external authorities impose.

Officers, their delegates and actors engage tasks and professional duties within a conformed business domain – as their assigned duties expect. Network Rail’s GRIP 4/5³ protocols regulate the engineering process in this illustration. Project direction manages the resources it musters, accurately and purposefully.

Quote: “Solyphony must fail: it threatens to change practice...”

Nowt sae queer as folk.

Saw it. Remembered the concrete skirmish – 1948? I was 14, makes you 13.

We enjoyed these teachers.
 History teacher insisted:
 Romans discovered concrete!
 Bricklayer instructor extolled the earlier Greeks.

Down the Soho Rd. with me, to Hockley Brook. You took the N° 8 to Spring Hill library – as you often did. The young librarian, not Westerman books, surely.

She let me into the adult section, on a gentle leash. Kindly called a decisive book down from the central library: Greek concrete precedent.

History responded: “Change”, he said, “is a continuum ...”

So it is.

¹ Collins 1994

² Article in “Explore Solyphony”

³ The GRIP protocol is a Network Rail property. The illustration herein is a client’s property.

“Process” and “Procedure” juxtaposed. Their isolation tolerates disparity.

GRIP 4 AIP Design Life-Cycle

1. Action: **Assign Design Remit for AIP**
 - 1.1. Actors:
 - 1.1.1. Assigner: Lead Engineer
 - 1.1.2. Assignee: Design Engineer
 - 1.2. State: **Assigned**
 - 1.2.1. Categorised in Programme Configuration
 - 1.2.2. Identified in Technical Work Scope (ITT)
 - 1.2.3. Entered in Schedule
 - 1.2.4. Design Resources Identified
 - 1.2.5. Resources Identified/Allocated (CTR)
2. Action: **Evaluate Remit**
 - 2.1. Actors:
 - 2.1.1. Design Engineer
 - 2.1.2. Designers & Related Resources
 - 2.1.3. Lead Engineer
 - 2.2. State: **Defined**
 - 2.2.1. Addresses Pertinent Requirements
 - 2.2.2. Accounts for Assumptions
 - 2.2.3. Describes Design Duty
 - 2.2.4. Identifies Physical and Operational Interactions and Boundaries
 - 2.2.5. Identifies Certifying Disciplines
 - 2.2.6. Lists the Applicable Compliance Standards
 - 2.2.7. Refines Schedule
 - 2.2.8. Assesses Resources
3. Action: **Formulate AIP Design Pack**
 - 3.1. Actors:
 - 3.1.1. Design Team
 - 3.1.2. Project Manager
 - 3.2. State: **AIP Design Pack**
 - 3.2.1. Design Specification and Drawings
 - 3.2.2. RAM: Definitions and Evaluations
 - 3.2.3. Compliance Statement
 - 3.2.4. Compliance Matrix
 - 3.2.5. Risk Assessment
 - 3.2.6. Hazard Assessments and Log
Environmental Statement
Continued ...

Fig. 2 Assured states of design and assignment of responsible actors

Solyphony date stamps every operational event. It traces the route from inception to conclusion, unequivocally. Stakeholders, regulatory bodies, contractors, professional services, et al agree when and where to exert the forces and resources they wield. Their partnership foils complexity. This scheme qualifies to schedule, accurately. Marking significant state changes, it informs Project Management. PM demurs, so what to do?

Construct a procedure ...

Figure 1 illustrates the extraction of a Project Management procedure from a Programme Direction process. Process states deemed salient suffice for PM and secure its scheduling.

The right-hand couplets – blue and green – identify process states and name active agents. The left-hand chart – yellow – identifies procedural states that PM then schedules. Regression is the essential foil: the PM record does become isolated from the active process.

Therefore, isolation has tolerated disparity.

Solyphony's expressions of a UK mandated PM scheme⁴ avoid disparity.

⁴ Multiple variants of Prince 2, in practise. Await validation

Issues and responses: